

C O L O R C H A R T



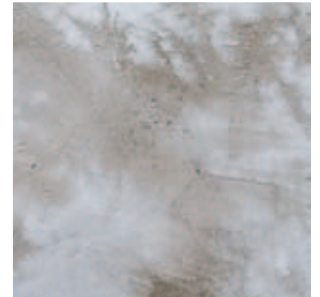
Zion



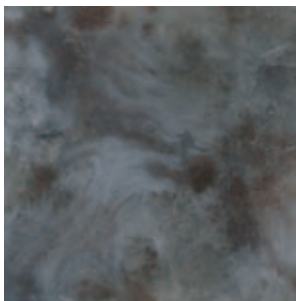
Mammoth



Denali



Everglade



Cascade



Sequoia



Rocky Mountain



Lassen



Joshua Tree



Wind Cave



Volcano



Arctic



Mesa Verde



Shenandoah



Grand Teton



Voyageur

CAUTION:

Color will vary greatly and be mottled. This chart is for reference only. Please request an actual color sample or apply sample on site before beginning any project. See reverse for formulas.

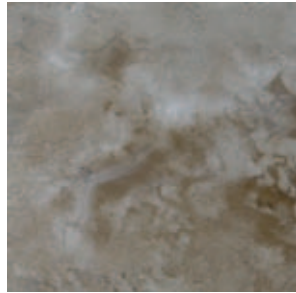
Craftsman Finish



westcoat[®]
SPECIALTY COATING SYSTEMS



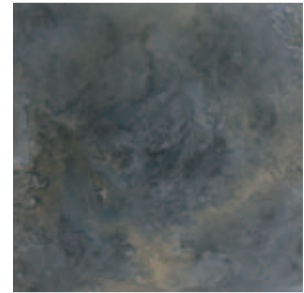
Yellowstone



Saguaro



Yosemite



Smoky Mountain

CRAFTSMAN FINISH FORMULAS

Color	Cement	TC-40 Liquid Colorant	SC-35X Primary Color 100% Coverage	SC-35X Accent Color 30-50% Coverage	SC-35X Highlight Color 10-20% Coverage	Sealer
Zion	TC-2	n/a	Mahogany	Onyx	n/a	EC-96
Mammoth	TC-2	1/2 oz Bark	Shale	Umber	n/a	EC-96
Denali	TC-4	n/a	Armor	Shale	White	EC-96
Everglade	TC-2	n/a	Umber	White	n/a	EC-96
Cascade	TC-4	1 oz Smoke	Onyx	Eggplant	n/a	EC-96
Sequoia	TC-2	1/4 oz Cinnamon	Mahogany	Onyx	n/a	EC-96
Rocky Mountain	TC-2	n/a	White	Camel	n/a	EC-96
Lassen	TC-4	8 oz Smoke	Shale	Sahara	Onyx	EC-96
Joshua Tree	TC-4	n/a	Shale	White	Sepia	EC-96
Wind Cave	TC-4	3 oz Yellow & 1 oz Smoke	Shale	Olive	n/a	EC-96
Volcano	TC-2	1/2 oz Straw	Adobe	Onyx	n/a	EC-96
Arctic	TC-2	n/a	White	Sahara	n/a	EC-96
Mesa Verde	TC-2	1/2 oz Straw	Mahogany	Onyx	n/a	EC-96
Shenandoah	TC-2	1/2 oz Bark	Sahara	White	n/a	EC-96
Grand Teton	TC-4	1 oz Smoke	Onyx	n/a	n/a	EC-96
Voyageur	TC-4	n/a	Olive	Sahara	Onyx	EC-96
Yellowstone	TC-2	1/4 oz Cinnamon	Adobe	Sahara	n/a	EC-96
Saguaro	TC-2	1/2 oz Bark	Umber	White	n/a	EC-96
Yosemite	TC-4	2 oz Yellow & 1 oz Smoke	Olive	Sahara	Eggplant	EC-96
Smoky Mountain	TC-4	1 oz Smoke	Shale	Shale	Onyx	EC-96

- Color will vary. This chart is for reference only. Please request an actual color sample or apply sample on site before beginning any project.
- Please contact your distributor or a Westcoat representative for detailed Craftsman Finish instructions.